

SS32 SIDESLIP METER



The **Altesco SS32** is the modern stand alone digital display for the sideslip meter models **SS2000HP** (passenger cars and light commercial vehicles) & **TSS1000** (heavy vehicles). The sideslip meter analyses the wheel alignment. The sideslip meter is a steel plate that can roll sideways on bearings. When the operator drives a vehicle wheel over the plate, the tire forces may move the plate sideways. If this is the case, the toe setting of an axle could be out of specification. The wheel is slightly dragged sideways over the floor. The sideslip is expressed in m/km. If the sideslip is 4 m/km, this means that if one wheel of the axle runs straight for one kilometer, the other one is dragged sideways four meters (see figure). A positive value means a toe-in, a negative value means a toe-out.

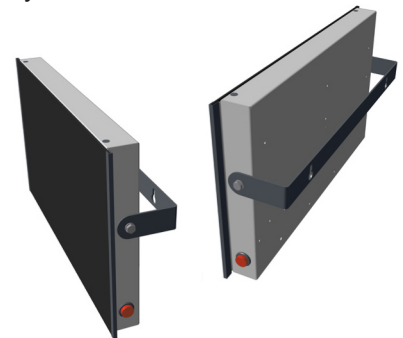
Quick, Simple & Effective measurement.

Test routine:

- Drive up.
- Let the vehicle wheel roll over the sideslip meter plate.
- Read the test results.
- If preferred: Assign results to an axle.
- If preferred: Print results.



Very compact display SS32: 58 x 33 x 5 cm



Print results direct from the display or connect the display into your network and **print via your web browser** from any available (network) printer.

SS32
SIDESLIP METER
TEST REPORT

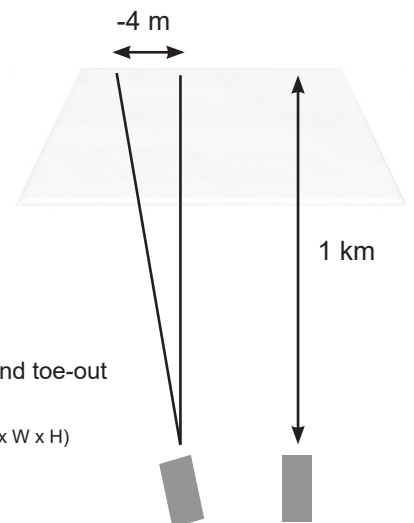
Customer: _____ License: _____
 Address: _____ Mileage: _____
 City: _____ Make: _____
 Operator: _____ Model: _____
 Remarks: _____ Year: _____

Date/time: 19-03-2018 09:21
 Version: SS32
 Serialno.: _____

Front axle		
Sideslip	-3 m/km	\ /
Rear axle		
Sideslip	-20 m/km	\ /

The SS32 is standard supplied with:

- Infra red remote control hand set.
- Wall bracket.



Specifications

		SS2000HP	TSS1000
• Measuring range	m/km	0-20 m/km toe-in and toe-out	0-25 m/km toe-in and toe-out
• Axle load	ton	4	18
• Dimensions	mm	650 x 510 x 38 (L x W x H)	800 x 1000 x 38 (L x W x H)
• Finish		Hot dip zinc	Hot dip zinc
• Power supply	V/Hz	1-ph. 230 V / 50Hz	1-ph. 230 V / 50Hz

Technical specifications are subject to changes without notice.

Altesco SS32 EN 20180323

ALTESCO, Altus-Escon-Company BV, Drachmeweg 26, NL-2153PA Nieuw Vennep, The Netherlands.
 Phone: +31 (0)88 ALTESCO, +31 (0)88 2583700, www.altus-test.com, info@altus-test.com.

